

Today's Take-Aways

Regional Updates

- The picture for ALC (Alternate Level of Care) patients has not improved. While there are approximately 800 empty long-term care beds in the region, as of Friday, 40% of these were in facilities with outbreaks. There are currently 11 long-term care and 10 retirement residences in the Ottawa area in outbreak as well as a couple hospitals.

- Currently there are no plans to revise the hospital Visitor Policies in Renfrew County. While Ottawa Hospitals are considering amendments to restrict visitors again, regionally we have been advised by public health that this is not something we need to look at yet. This could change quickly however. We will keep you updated.

- The regional Acute Care Group is focused on patient flow initiatives and ensuring patients are repatriated to their home facility as soon as possible.

- Dr. Rob Cushman, Acting Medical Officer of Health for the Renfrew County and District Health Unit has posted a new video today warning community members against Thanksgiving gatherings. The link will be shared with today's communication and has been shared on the hospital's social media sites.

- In partnership with EMS, Public Health, hospitals, primary care, and pharmacies, we are looking at new ways to ensure widespread uptake of the flu shot within the community. More details to come.

Wellness

- As we head into Thanksgiving weekend, the Senior Leadership Team is expressing thanks and gratitude to all staff, physicians and volunteers for the work they are doing while dealing with staffing shortages, and challenged by other stressors both personally and professionally.

The Senior Leadership Team recognizes that, for a variety of reasons, stress levels are once again on the rise and they will be exploring ways to support wellness in the coming weeks in partnership with the Communication Working Group's wellness sub-committee. Any suggestions regarding activities or measures that could help improve health and wellness for our team can be forwarded to carolyn.levesque@prh.email.

EORLA

- EORLA has made a significant investment in equipment and staffing in order to be able to increase their COVID-19 testing capacity by 3,000 tests per day. It is anticipated that by the end of November this increase will have been phased in to enable them to complete up to 6,000 tests per day.

- The current turn-around time for COVID-19 testing is 24-36 hours for priority tests and 5-7 days for all others.

Today's Take Aways...Continued From Front

Clinical News

- There continues to be significant staffing challenges throughout the organization as a result of COVID-19 measures and testing requirements.

Occupational Health and Safety

Some clarification about our staff and family member COVID testing process:

- The COVID-19 drive-up testing clinics operate from 8:30 a.m. to 12:30 p.m. weekdays. The drive-up test site is located right next to the Tower D staff door at the top of the hill.

- Tests results are currently taking 24-48 hours, barring any unforeseen delays. Occupational Health and Safety will provide staff who receive a swab with the information they need to check for results online.

- Please note that all communication pertaining to the scheduling of tests or test results should go through EMAIL or by calling the Occupational Health Extension (8200) and not through Facebook Messenger or via personal texts to the Occupational Health and Safety staff.

- While we recognize that waiting for test results is stressful and poses inconvenience, please trust the process and know that the staff who are working diligently on scheduling tests and answering questions can't speed up the turn-around time and in many cases, won't get the results before staff are able to find them online.

- Plans are being made for staff flu shot clinics, likely starting at the end of the month. Stay tuned for more details on the process for booking these by department.

PPE

- A reminder that staff who are required to wear eye protection during their shift are to be wearing it appropriately with all patient interactions. When opting to remove eye protection in nursing areas where there are no patients or visitors, the appropriate cleaning and storage of masks on the provided hooks is still required.

- Please note that there is only one way to wear a face shield and this is how it should be worn at all times.

- Please note that the Lysol wipes are not hospital grade and therefore are to be used in spaces where we have no patient or visitors, such as offices. Empty Lysol wipe containers are to be discarded as we are not keeping them.

Accel wipes are our hospital grade disinfectant wipes. Please note that the substitute product with Saber in the reused containers are still in circulation; please pay attention to the 'use before date'. We continue to save the Accel wipe containers.



CONSTRUCTION CORNER

Rehab Roof/Deck Project:

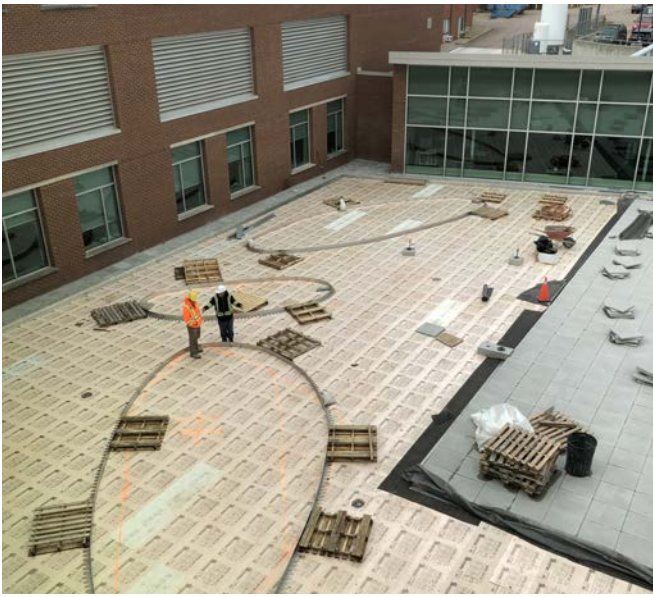
Work is progressing well and is on schedule to be completed towards the end of the month. The installation of the grey paving stones in the centre of the roof is complete. Contrasting darker paving stones are being inserted to make the layout of the oval track. The metal stainless steel garden edging was laid out showing the location where the mounds will retain the soil and plants.

Tower A Roof Project:

The work is on hold after a worker tested positive for COVID and now the entire Ottawa-based crew is on self-isolation in Ottawa.

Tower A 1st Floor North Wing:

Work started this week with the contractor installing the main sprinkler line along the corridor.



SALE

Sunshine
Gift Shop

Another Auxiliary Project

**Happy Thanksgiving and
Thanks For Your Continued Support**



**It's A Cornucopia Of
Savings!**

October 4th-10th

20% Off

**(Plus Staff/Volunteer Discount)
All Regular Priced Merchandise**

(Excludes: food, stamps, cards, TV rentals, books, items sold at cost)

Our Thanksgiving Draw will take place Friday, October 9th.

**As an added token of
appreciation for our
staff and physicians,
all coffee sold in the
Mural Cafe will be priced
at \$1 on**

**Friday, October 9th
so join us for a cup!**



Employee Discounts



Looking for staff discounts?

All staff discounts, employee offers, promotional codes and other PRH perks can now be found on the Staff Resources section of the PRH website:

<https://www.pemreghos.org/staffdiscounts>

What discounts are there?

PRH Staff Association / Insurance Providers
Local Health and Fitness Facilities / CAA
Scrubs / Access Perks / Perkopolis
Park 'n Fly and more...

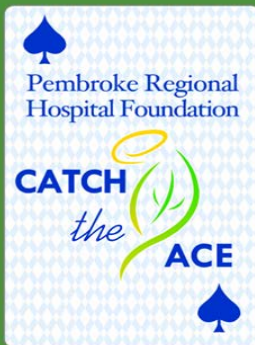
Do You Have A COVID-19 Question?

Email: covid19questions@prh.email

Would you like to celebrate or express gratitude to a group or individual?

Email: celebration&recognition@prh.email

For other questions/concerns, contact Infection Prevention and Control (ext. 7106) or Occupational Health and Safety (ext. 7202).



Week #12 Winner

Congratulations

SAMANTHA

LEFEBVRE

Weekly Pot \$1,863

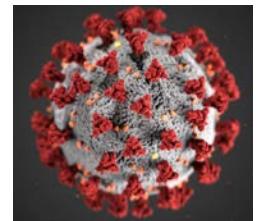
Winning ticket
#1-7061845
Card #16 - King of Hearts

Week 13 Draw is now LIVE!

Progressive Jackpot now **\$20,733** and climbing
PRHcatchtheace.ca

Current Facts and Figures

- PRH: 0 COVID positive patients
- Renfrew County:
 - 7 active cases, 1 death
 - 29,765 tests completed
- Ottawa:
 - 805 active cases, 295 deaths
- Ontario:
 - 8,332 active cases, 2,955 deaths



Foundation News



Auto Lotto tickets are available now at www.autolotto.ca

Catch the Ace Drive Thru is now OPEN at 775 Pembroke St East

Monday 8am-8pm,
Tuesday 8am-2pm,
Saturday 10am-2pm

Guardian Angels

Lynda Aird (Medical) / Betty Ann Spence (Medical)

Julie Bramburger (Medical) / Dr. Anne-Marie Savoie

Pembroke Regional
Hospital Foundation



Fondation de l'Hôpital
Régional de Pembroke

Celebrating National Catholic Health Care Week

Working at Pembroke Regional Hospital means that we are all ambassadors for Catholic health care, helping the people around us – those we serve, our families, friends, and neighbours – understand who we are and our impact in the community.

At the heart of Catholic health care is a deep respect for the intrinsic value and dignity of every human being and an unwavering commitment to serving all people, from all backgrounds and faiths – especially society's most vulnerable.

As members of the PRH health care team, we are part of a vibrant legacy that began with our foundress Marguerite D'Youville and helped form the foundation of today's local health system. Every day we forge ahead, meet changing and growing needs in our communities and live the mission in each and every step.

Nationally, Catholic health care serves over five million Canadians each year and employs over 88,000 people.

As part of Catholic Health Care Week, share with others what makes you proud to work at Pembroke Regional Hospital and how being part of Catholic health care impacts your interactions with those we serve and your colleagues.

